

INSTALLATION INSTRUCTIONS

B-7125 InstaDry™ Surface-Mounted Automatic Hand Dryer



BUILDING VALUE SINCE 1906



IMPORTANT SAFETY INSTRUCTIONS

READ AND FOLLOW ALL INSTRUCTIONS

- * **Electric Hand dryer intended for use in a household environment by non-expert users. Not suitable for outdoor use.**
- ** **This appliance can be used by children aged from 8 years and above and persons with reduced physical, sensory or mental capabilities or lack of experience and knowledge if they have been given supervision or instruction concerning use of the appliance in a safe way and understand the hazards involved. Children shall not play with the appliance. Cleaning and user maintenance shall not be made by children without supervision.**
- *** **If a fault develops disconnect the electrical supply, a qualified electrician should be called.**

SAVE THESE INSTRUCTIONS

Electrical Characteristics

Universal Voltage: -110V–240V, 50/60 Hz, 200 Watts, cULus Listed and CE marked.

Recommended Mounting Heights

Distance from floor to bottom mounting screw holes of mounting base. (Dimension A)

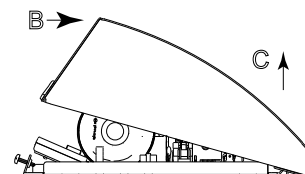
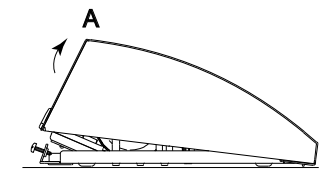
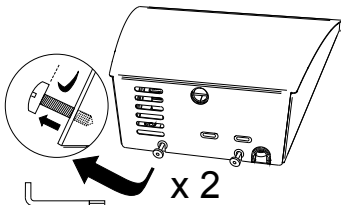
Hand Dryer

Men's Washrooms	46"	(1168mm)
Women's Washrooms	44"	(1120mm)
Children's Washrooms, ages 3-4	36"	(915mm)
Children's Washrooms, ages 5-8	40"	(1015mm)
Children's Washrooms, ages 9-12	44"	(1120mm)
Universal Design	40"-48"	(1015-1219mm)

* Bobrick automatic hand dryers should be installed 15" (380mm) above any projection or horizontal surface which may interfere with the operation of the automatic sensor.

Removal of Cover

1. Start installation of dryer by removing cover. To remove cover, insert Allen wrench (provided with dryer) into cover bolts which are equally spaced on bottom of cover and turn COUNTERCLOCKWISE (see adjacent illustration.) Cover bolts do not need to be completely removed and can remain in position on baseplate ready to refit the cover.
2. To remove cover, place a hand on each side of cover and follow the sequence shown in the illustrations. Sequence is as follows:
 - a. Disengage cover from cover bolts on baseplate.
 - b. Disengage cover from top of baseplate.
 - c. Remove cover from unit.



Distributed by
www.PandaProducts.com
Phone: (800) 608-6568
Fax: (409) 840-5545
info@pandaproducts.com

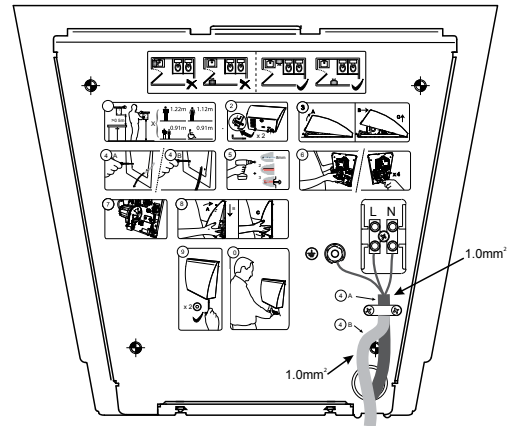
Installation of Mounting Base

FOR PROPER ELECTRICAL CONNECTIONS, CHECK LOCAL BUILDING CODE. UNIT MUST BE INSTALLED BY A QUALIFIED LICENSED ELECTRICIAN

1. Hold the Installation Template against the wall in the desired location of the installed dryer. See recommended mounting heights above.
2. Make sure line on template representing bottom of dryer mounting base is horizontal and located at the desired height above floor.

NOTE: Surface-mounted electrical supply entry is located in the lower right corner of the mounting base. Surface-mounted supply cable should be fitted in a conduit.

3. For brick, stone and concrete walls, drill four 0.315" (8mm) holes to suit provided wall plugs 0.315" x 1-1/4" (8 x 45mm) and screws #10 x 2" (4.8 x 50mm) long. See template for wall plug and screw installation details. For plaster or dry wall construction, provide concealed backing to comply with local building codes and secure with four #10 (4.8) round-head sheet-metal screws or 3/16" (5mm) toggle bolts (not furnished).
4. Fasten mounting base securely to wall.



WARNING: TURN ELECTRICAL POWER SUPPLY OFF BEFORE MAKING ELECTRICAL CONNECTIONS. DRYER MUST BE GROUNDED (EARTHED).

Electrical Connection

WARNING: TURN ELECTRICAL POWER SUPPLY OFF BEFORE MAKING ELECTRICAL CONNECTION.

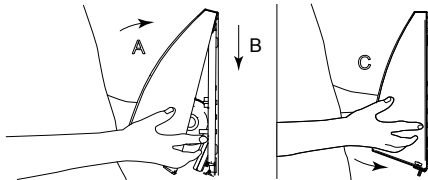
FOR PROPER ELECTRICAL CONNECTIONS, CHECK LOCAL BUILDING CODE. UNIT MUST BE INSTALLED BY A QUALIFIED LICENSED ELECTRICIAN

1. Connect dryer to nearest distribution panel. Use wire as required by local electrical code. In the United States and Canada use No. 18 wire (18 AWG). Maximum overall dimension of supply cable must be 14mm (.55 inches).
2. Wiring Instructions:
 - a. This appliance is intended for connection to fixed wiring.
 - b. A fused means for disconnection in all poles must be provided in the fixed wiring in accordance with the wiring rules.
 - c. Check that the electrical rating shown on the Hand Dryer (rating label) is compatible with the electrical supply.
 - d. **WARNING: THIS PRODUCT MUST BE EARTHED.**
 - e. Installation and wiring must conform to current IEE Regulations (UK), local or appropriate regulation (other countries).
 - f. **For 115 Volt-Dryers:** Connect ground wire to ground terminal marked \oplus , the black or hot wire to terminal marked L1 and neutral or white wire to terminal marked N.
 - g. **For 208–240-Volt Dryers:** Connect ground wire to ground terminal marked \oplus . Supply wire colored black or brown to terminal marked L1, neutral wire colored white or blue to terminal L2.
3. Secure electrical wire in strain relief clamp provided on mounting base.

Replace Cover

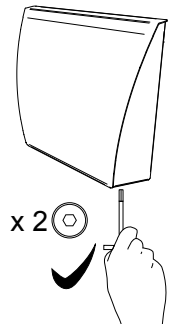
1. To replace cover, put cover up to baseplate and engage. Push bottom of cover to engage with cover bolts (see illustration.)

NOTE: Space between cover and wall must be the same on all four sides.



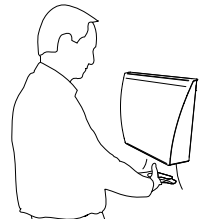
2. To tighten cover bolts, insert Allen wrench into cover bolts on bottom of cover. Turn **CLOCKWISE** until both bolts are tightened.

NOTE: Do not over tighten cover bolts. Over tightening cover bolts may damage cover.



Check Dryer Operation

1. Turn electrical power supply on. Position hands under nozzle and dryer should turn on. Remove hands from under nozzle and dryer should stop.



Maintenance

WARNING: TURN ELECTRICAL POWER SUPPLY OFF BEFORE DOING ANY MAINTENANCE OR SERVICE TO DRYER.

DRYER MUST NOT BE OPERATED UNLESS COVER IS IN PLACE.

MOTOR IS NOT LIVE AND ACCESS TO LAMINATIONS IS NOT POSSIBLE

FOR PROPER ELECTRICAL CONNECTIONS, CHECK LOCAL BUILDING CODE. UNIT MUST BE INSTALLED BY A QUALIFIED LICENSED ELECTRICIAN

1. Exterior of cover should be cleaned with a damp cloth to remove dust and surface dirt. Do not use abrasive agents or solvents as they may permanently damage surface of cover.
2. At least once every 6 months remove cover. Using a small brush or vacuum, clean out buildup of dust and lint from air-intake grille and baffle.

NOTE: if dryer is installed where there is a lot of dust and dirt in the air, the interior of the dryer should be cleaned out more frequently.

Warranty

IMPORTANT

LIMITED WARRANTY

SAVE

Installation Date: _____

Serial No(s): _____

Installation Address: _____

Telephone No.: _____

The Bobrick Dryer of the serial number(s) indicated herein, and all parts are warranted to the original owner of the installed unit for B-7125 five years from date of original purchase for hand dryers, against defects in factory workmanship or material under normal use and service.*

This warranty is limited to repair or exchange of defective parts at the option of Bobrick Washroom Equipment, Inc.

THIS WARRANTY DOES NOT COVER ACCIDENTAL DAMAGE, IMPROPER HANDLING OR INSTALLATION, OR REPAIRS MADE BY UNAUTHORIZED PERSONS, AND SPECIFICALLY EXCLUDES CLAIMS FOR INDIRECT, ACCIDENTAL OR CONSEQUENTIAL DAMAGES TO PROPERTY. THE IMPLIED WARRANTIES OF MERCHANTABILITY AND FITNESS FOR A PARTICULAR PURPOSE ARE LIMITED TO THE SAME DURATION OF THE ABOVE WARRANTY.

Some states do not allow the exclusion of incidental or consequential damages, so the above limitation or exclusion may not apply to you. Some states do not allow limitations on how long an implied warranty lasts, so the above limitation may not apply to you. This warranty gives you specific legal rights, and you may also have other rights which vary from state to state.

*** Normal service constitutes performing the following preventive maintenance procedures at six-month intervals.**

Remove cover and clean any lint, dust or grease from air-intake grille and baffle from behind air-outlet nozzle.

Labor costs for preventive maintenance shall be at owner's expense.

For repair or exchange of defective part, send the part, together with installation date and serial number, to BOBRICK.



BUILDING VALUE SINCE 1906

In the United States: BOBRICK WASHROOM EQUIPMENT, INC.

200 Commerce Drive, Clifton Park, NY 12065-1350,
6901 Tujunga Avenue, North Hollywood, CA

In Canada: BOBRICK WASHROOM EQUIPMENT COMPANY

45 Rolark Drive, Scarborough, Ontario M1R 3B1

International:

BOBRICK WASHROOM EQUIPMENT, INC. 6901 Tujunga Avenue, North Hollywood, CA 91605-6213:

BOBRICK WASHROOM EQUIPMENT Pty, Ltd. Australia

BOBRICK WASHROOM EQUIPMENT Limited United Kingdom

