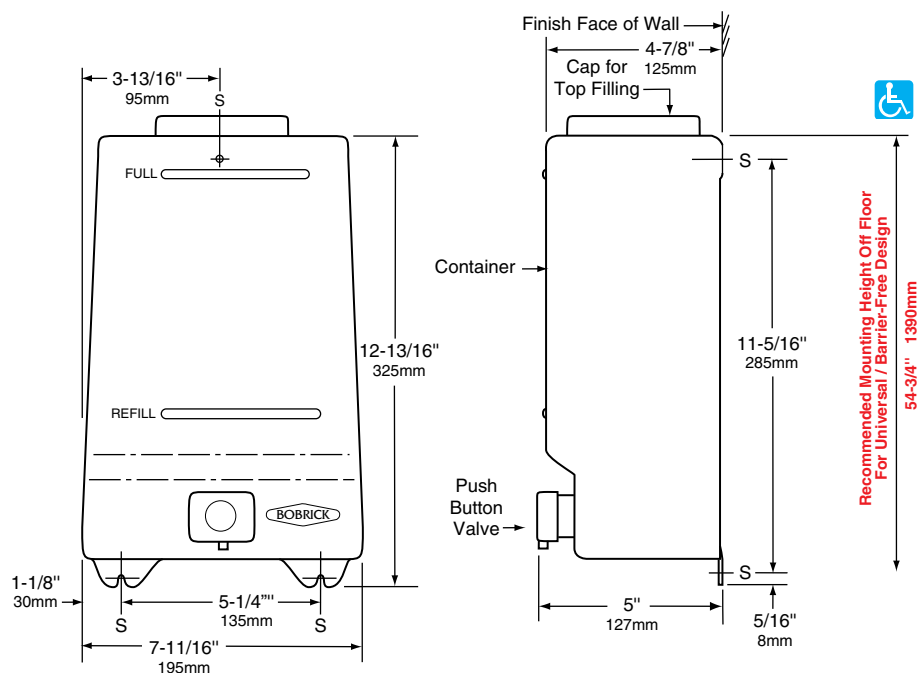




Technical Data

LARGE-CAPACITY SOAP DISPENSER FOR LIQUID AND LOTION SOAPS, AND DETERGENTS

B-60



MATERIALS:

Valve — Black molded plastic push button. Soap head-holding mushroom valve. Stainless steel spring. U-packing seal and duck-bill. Antibacterial-soap-resistant plastic cylinder.

Container — Translucent, shatter-resistant polyethylene. Equipped with impact-resistant polypropylene cap for top filling. Capacity: 1.5-gal. (5.7-L).

OPERATION:

Corrosion-resistant valve dispenses commercially marketed all-purpose hand soaps. To prevent corrosion, use only chloride-free pH-neutral liquid soaps. Valve operates with one hand, without tight grasping, pinching, or twisting of the wrist and with less than 5 pounds of force (22.2 N) to comply with barrier-free accessibility guidelines (including ADAAG in U.S.A.). Large-capacity, translucent container provides visible soap level. To fill container, unscrew and remove the large cap.

INSTALLATION:

Mount dispenser on wall with three sheet-metal screws, furnished by manufacturer, at points indicated by an S. Rubber washer must be used inside container to seal top mounting hole. For plaster or dry wall construction, provide concealed backing to comply with local building codes, then secure unit with sheet-metal screws. For other wall surfaces, provide fiber plugs or expansion shields for use with sheet-metal screws, or provide 1/8" (3mm) toggle bolts or expansion bolts.

Note: Provide 4" (102mm) minimum clearance from cap to underside of any horizontal projection. Push buttons should be located 44" (1120mm) maximum above the finish floor.

SPECIFICATION:

Container shall be translucent, shatter-resistant polyethylene with a capacity of 1.5-gal. (5.7-L) and furnished with a large cap for top filling. Corrosion-resistant valve shall dispense commercially marketed all-purpose hand soaps. To prevent corrosion, use only chloride-free pH-neutral liquid soaps. Valve operates with one hand and with less than 5 pounds of force (22.2 N) to comply with barrier-free accessibility guidelines (including ADAAG in U.S.A.).

Soap Dispenser shall be Model B-60 of Bobrick Washroom Equipment, Inc., Clifton Park, New York; Jackson, Tennessee; Los Angeles, California; Bobrick Washroom Equipment Company, Scarborough, Ontario; Bobrick Washroom Equipment Pty. Ltd., Australia; and Bobrick Washroom Equipment Limited, United Kingdom.