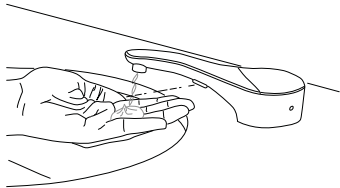
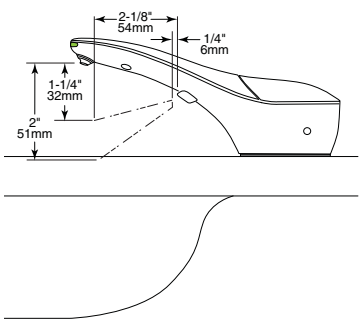


To Operate:

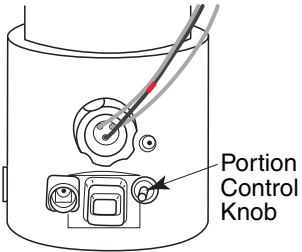
1. **Prime Unit** – After filling dispenser, plug in power to start prime. If unit is plugged in prior to filling dispenser, place hand under spout within sensor location to start prime.



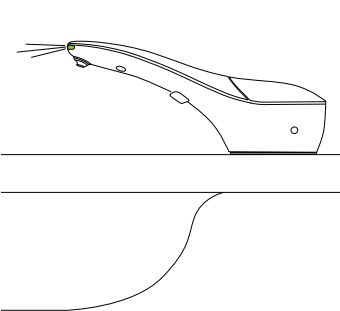
2. **Standard Dispense** – Place hand under spout within the sensor location for approximately 1 second to dispense controlled amount of foam hand soap.



3. **Adjusting the foam quality** – Unit dispenses approximately 12ml of foam. Foam quality in terms of more or less liquid used to produce the foam can be adjusted by rotating the Portion Control Knob clockwise for more air in the foam and counterclockwise for less air in the foam.

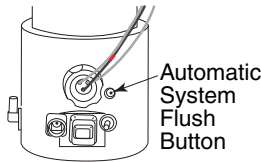


4. **LED Light Indicators** – When activated, solid green LED will light. If green light is flashing, remove hand to allow unit to reset, then activate again. Hand must be removed for a second activation. Flashing red LED indicates time to replace batteries.



Routine Cleaning and Maintenance:

Using a damp cloth, wipe the chrome-plated exterior of the dispenser daily. Periodically (about 3 to 6 months), it is recommended to flush the system with lukewarm water for cleaning and maintenance.



- When minimal amount of soap is left in the bottle, fill dispenser with lukewarm water from top to dilute soap.
- Press on Automatic System Flush Button to flush the system.
- Once unit is flushed, press Automatic System Flush Button again to stop dispensing.
- Fill unit with fresh foam soap, and dispense as usual.

Troubleshooting:

- Soap dispenser does not dispense soap, but you can hear motor running. The green LED lights up when hands are under spout.
 - Press the Automatic System Flush Button until soap comes out
 - Press Automatic System Flush Button again to turn it off
- Soap dispenser does not dispense soap and you cannot hear motor running. The green LED does not light up when hands are under spout.
 - Be sure power is supplied to unit.
 - Be sure Fiber Optic Cable with red band near end is located in bottom hole of Rubber Connector (Refer to Step #16 in Instructions).
 - Loosen the Fiber Optics Nut from the Bottom Housing and push the top two fiber optics into the Rubber Connector until it cannot slide in anymore.
 - If it is still not working:
 - Remove Fiber Optic Cables from the Bottom Assembly.
 - Remove the Fiber Optics Nut and Rubber connector.
 - With power connected, place your hand in front of the fiber optics connection area and a green LED should light up. If it does not, the PC Board may have an issue. Contact Bobrick Customer Service for corrective action.

Warranty:

SureFlo Automatic Foam Soap Dispenser is warranted to be free from defects in workmanship and material under normal usage from the date of purchase for a period of 3 years.



SureFlo® Automatic, Counter-Mounted Soap Dispenser
INSTRUCTIONS FOR INSTALLATION, OPERATION & MAINTENANCE

BOBRICK MODEL B-828 FOAM SOAP DISPENSER

Tools required: Phillips Head Screw Driver

Clearances and Mounting Requirements:

- 1-3/8" (35mm) diameter mounting hole required.
- Minimum 18" (430mm) vertical clearance needed below the counter.
- 5" (125mm) diameter clearance needed below the mounting hole to accommodate bottle and bottom housing.
- Minimum 2-1/4" (55mm) diameter clearance needed for Mounting nut directly below the counter to clear sink rim.
- Recommend drilling mounting hole 6" to 8" (150 to 205mm) from the wall, and 2-1/2" to 3" (65 to 75mm) from sink rim.

For New Installation:

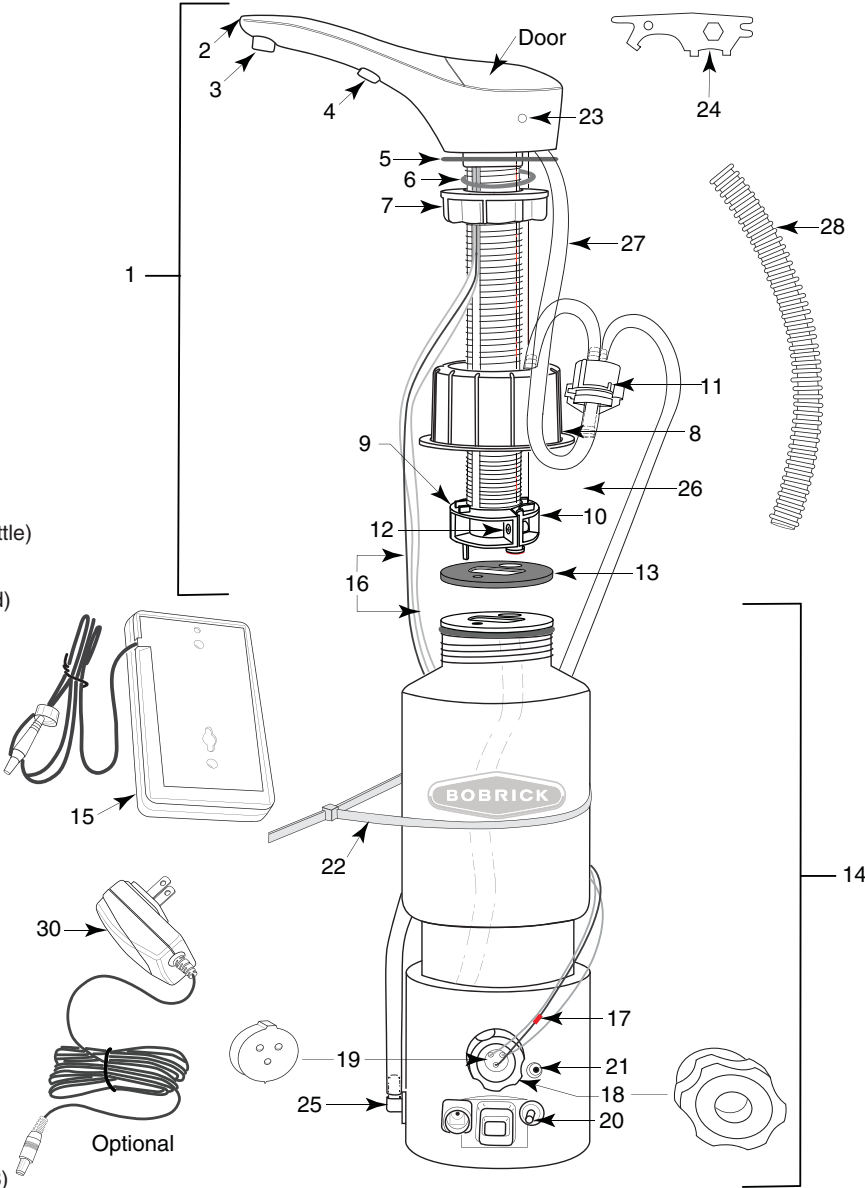
- Refer to mounting template for drilling locations (Form No. 824-197).

For Retrofit:

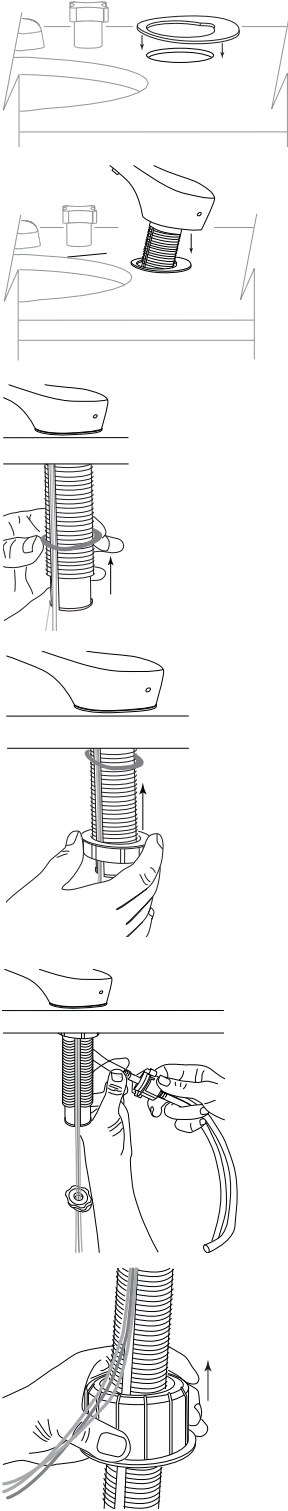
- Remove existing dispenser(s).
- Clean area.
- Ensure hole is 1-3/8" (35mm) diameter.
- If necessary, enlarge opening using appropriate drill bit. For granite/marble counters, recommend using a tile or diamond drill bit and dowel to guide the drill bit. If needed, mounting hole should be offset to clear the sink rim. The Mounting nut requires 2-1/4" (55mm) diameter clearance directly below the counter.

Parts List:

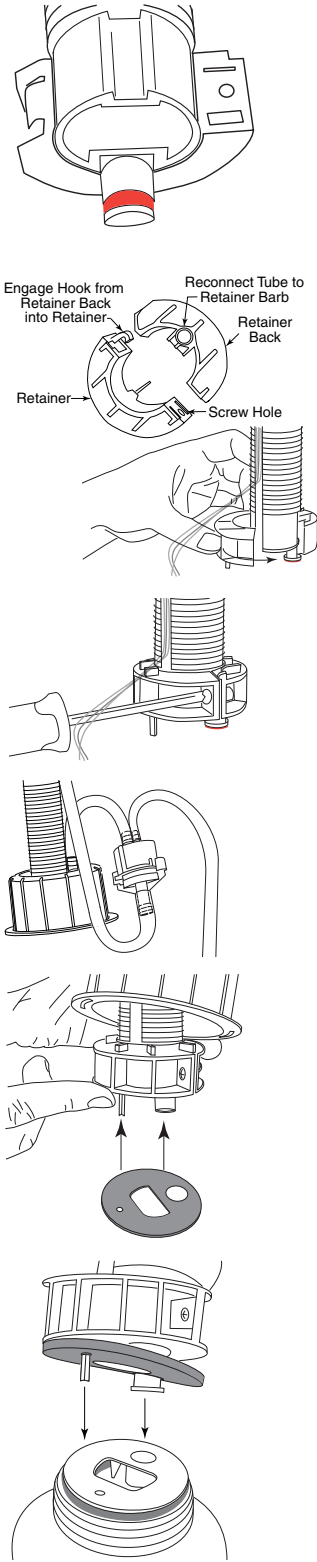
Item	Description
1	Top Assembly with Spout, Door and Shank
2	LED Light Pipe
3	Foam Nozzle Tip with Mixer Cartridge
4	Fiber Optic Insert with Sensor Lenses
5	Rubber Counter Gasket
6	Wave Washer
7	Mounting Nut
8	Bottle Cap
9	Retainer
10	Retainer Back
11	Stem Mixer Housing with Mesh Ring
12	Screw
13	Rubber QC Gasket
14	Bottom Housing Assembly (includes Soap Bottle)
15	Battery Pack (Requires (4) "D" cell alkaline batteries not included)
16	(2) Fiber Optic Cables for Sensors
17	(1) Light Pipe Fiber Optic cable for LED Light Pipe (color coded with red band)
18	Fiber Optic Nut
19	Fiber Optic Connector (rubber)
20	Portion Control Knob
21	Automatic System Flush Button
22	Cable Tie
23	Key Hole
24	BobKey
25	Air Tube Adapter
26	Air Tube
27	Soap Tube
28	Fiber Optic Cable Cover
29	Mounting Template (Form No. 824-197)
30	Optional: A/C Adapter Kit with U. S. Plug Order Part No. 3974-57 (for UK, Europe and Australia, order additional plug kit, part no. 3974-58)



Installation:



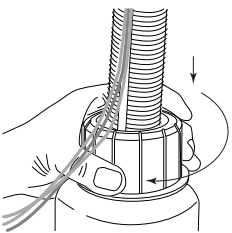
1. Place Counter Gasket over mounting hole to align with profile of dispenser.
2. Insert Shank with tube and all Fiber Optic Cables carefully through mounting hole.
3. Install Wave Washer on Shank from below counter.
4. Install Mounting Nut on Shank and screw on to Shank. [Minimum 2-1/4" (55mm) diameter clearance needed below the counter for the mounting nut]. Do not tighten Nut completely until the end of installation.
5. Insert tube from the Top Assembly with Spout and Shank onto Stem Mixer Housing.
6. Insert Bottle Cap on Shank. Ensure Fiber Optic Cables and tubing are on the outside of the Bottle Cap.



7. Place Retainer Back into grooves of Shank.
8. Connect and rotate Retainer Back to Retainer. Ensure Fiber Optic Cables are on the outside of the Retainer.
10. Insert screw and tighten retainers together.
11. Connect larger diameter tube on to prong of Retainer located on top.
12. Place Rubber QC Gasket on the bottom of the Retainers, ensuring big hole and little hole are aligned properly with Retainer prongs.
13. Insert Bottle with Gasket to the Retainer ensuring prongs go in appropriate holes in the bottle.

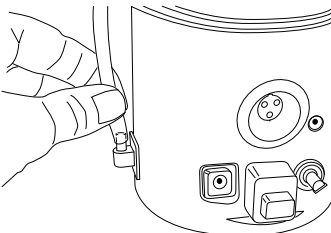
Replacement Parts List

Part Name	Part No.
- Top Housing Assembly Foam	828-225
- Bottom Housing Assembly Foam	828-250
- A/C Adapter	3974-57
- International Assortment Plugs (U. K., Europe, Australia)	3974-58
- D Size Battery Pack (Batteries not included)	824-241
- Nozzle Tip Replacement Kit Foam	828-210
- Installation Hardware Packet	828-243

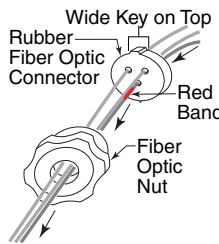


14. Slide Bottle Cap down over Bottle threads and finger tighten clockwise and then turn an additional 3/4 turn to seal connection.

CAUTION: DO NOT bend or kink Fiber Optic Cables

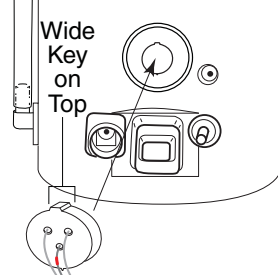


15. Connect smaller diameter tube to air tube adapter located on Bottom Housing.



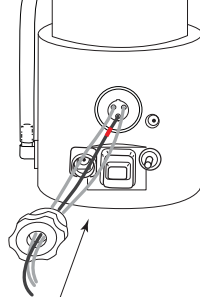
16. Insert Fiber Optic Nut on cables, then insert Fiber Optics into Rubber Fiber Optic Connector using the larger diameter side first.

NOTE: Fiber Optic Cable coded with red band must be inserted into bottom hole.



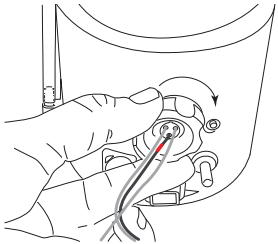
17. Insert Rubber Fiber Optic Connector to bottle, then push Fiber Optic Cables into holes.

NOTE: Ensure wide key portion of Rubber Fiber Optic Connector is on top.

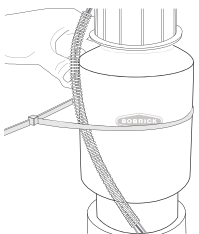


18. Push Fiber Optic Cables until fully seated into PC Board (not shown) located behind the Rubber Fiber Optic Connector.

NOTE: DO NOT STRIP coating from Fiber Optic Cables.

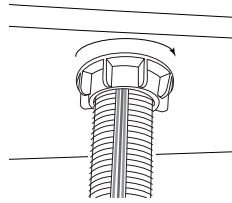


19. Place Fiber Optic Nut over Rubber Connector then tighten Clockwise to prevent cables from coming loose. Make sure not to rotate the Rubber Fiber Optic Connector.

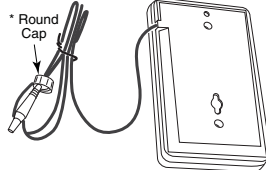


20. Place Fiber Optic cable cover over loose fiber optics to conceal. Use cable tie to hold Fiber Optic Cables and fiber Optic Cable Cover against bottle.

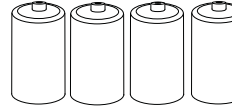
NOTE: DO NOT bend or kink Fiber Optic Cables or Air Tube.



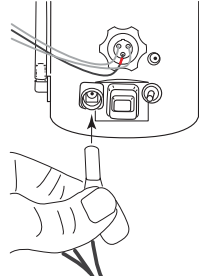
21. Ensure Mounting Nut is tightened against bottom of counter.



22. Mount Battery Pack on wall nearest dispenser. Mounting hardware is inside the Battery Pack. * Round Cap on plug is not required for this model, pull back prior to plugging into port.



23. Install 4 "D" cell Alkaline batteries.



24. Plug Power Supply into bottom housing base.

NOTE: If unit does not operate - Follow step 17 again to ensure Fiber Optic Cables are fully seated.

TOP FILL ONLY !



Filling Instructions: (use foam soap only)

Unit will dispense commercially Marketed Bulk Foam Soap.

1. Insert tip of BobKey provided into opening of concealed locking mechanism to disengage door.
2. Door will disengage and rotate clockwise for filling from the top.
3. Fill dispenser with commercially marketed bulk foam hand soap (**Do not use liquid soap**).
4. Close door counter-clockwise to lock in place.

MOUNTING TEMPLATE

LEFT SIDE

RIGHT SIDE

View from Top of Counter

View from Top of Counter

Recommended Mounting Distance
to Finish Face of Wall

Between 6" to 8" (150 to 205mm)

Recommended Mounting Distance
to Finish Face of Wall

Between 6" to 8" (150 to 205mm)

Drill
1-3/8" (30mm)
Diameter Hole

Drill
1-3/8" (30mm)
Diameter Hole

2-1/2" to 3"
(65 to 75mm)
from Sink Rim
to center
of Mounting Hole

2-1/2" to 3"
(65 to 75mm)
from Sink Rim
to center
of Mounting Hole

6"
(150mm)

6"
(150mm)

7"
(175mm)

7"
(175mm)

8"
(205mm)

8"
(205mm)

7"
(175mm)

7"
(175mm)

Distributed by
www.Ameraproducts.com
Phone: (800) 608-6568
Fax: (409) 840-5545
info@ameraproducts.com

MOUNTING TEMPLATE

SureFlo® Automatic Counter-Mounted Soap Dispensers Bobrick Models B-824 Liquid and B-828 Foam

Required Clearances:

Mounting Hole: 1-3/8" (30mm) diameter

Maximum Counter Thickness: 2" (50mm)

Below Counter:

18" (455mm) vertical clearance

5" (125mm) diameter directly below mounting hole for bottle and bottom housing.

2-1/4" (55mm) diameter needed for mounting nut directly below mounting hole. If sink rim below the counter is within the clearance area, use a spacer to ensure mounting nut is firmly tightened against, bottom of the counter.

Instructions:

1. Using template, locate mounting hole position (on left or right side). Ensure sink and plumbing fixtures DO NOT interfere with dispenser above or below the counter (refer to clearances).
2. Drill 1-3/8" (30mm) diameter hole.

Sinks with Rim Over the Counter Area:

Unit is not compatible with a sink rim greater than maximums. See Fig A and B.

Fig. A

X = 1-1/2" (40mm) Maximum

Y = 1" (25mm) Maximum

Fig. B

X = 2-1/2" (65mm) Maximum

Y = 1/2" (12.7mm) Maximum

CAUTION:

Rim must not come into contact with activation area.

